



Our Platoning Journey

**Blue Ridge Elementary
Walla Walla, WA**



Kim Doepker, Principal
kdoepker@wwps.org
 Tina Holbrook, Learning Specialist
tholbrook@wwps.org

Goals for the Session

1. Share demographics on Blue Ridge Elementary
2. Explain why we chose "Platoning"
3. Share our results
4. Offer ideas for Implementation
5. Discuss and offer insight on scheduling
6. Share where Blue Ridge is heading for 2013-2014
7. Answer questions you may have

Blue Ridge Demographics

Student Population

- 310 K-5 Students
- 92% Hispanic Population
- 68% Second Language Learners
- 92% Free-Reduced Meals (Highest % in WWPS)

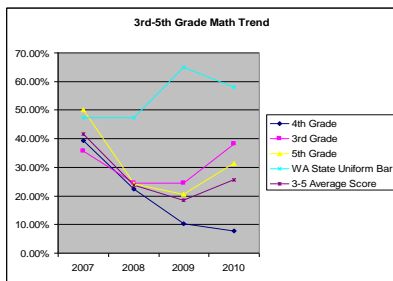
Staff Population

- 22 Certified Staff members (of which 8 are bilingual)
- 18 Classified Staff members (of which 9 are para pros)
- 2 Sections in Kindergarten, 4th and 5th grades
- 3 Sections in grades 1st, 2nd and 3rd

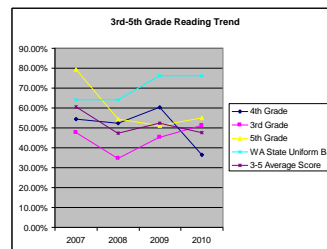
Need for Intervention

- ▶ Achievement Gap was widening
- ▶ Bottom 5% of elementary schools not making gains; lowest achieving
- ▶ We made "the List"

2007-2010 Math Trend



2007-2010 Reading Trend



Why Platooning?

Platooning

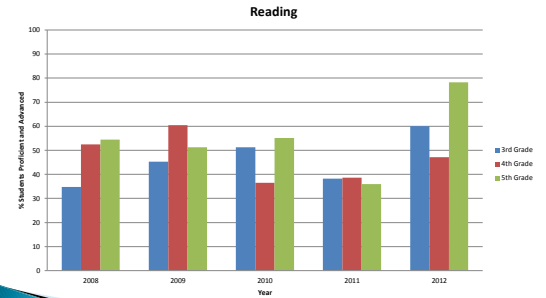
- ▶ Strength-based teaching
- ▶ Focused efforts
- ▶ Team Teaching Approach

Platooning Model

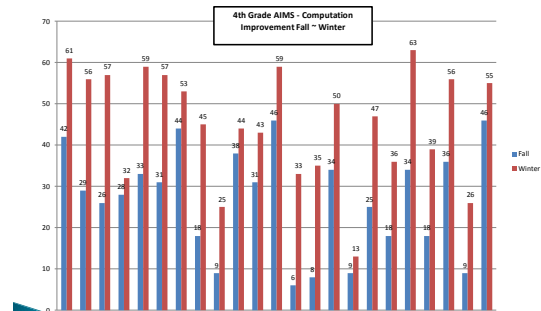
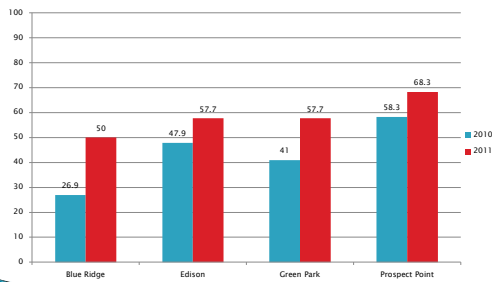
- ▶ 60 Minute Rotations
 - Science
 - Reading
 - Social Studies/Writing
 - Math



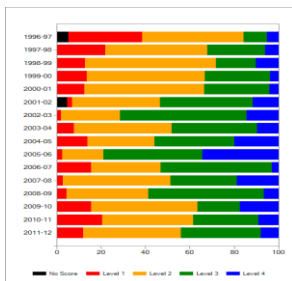
MSP Results 2008-2012



4th Grade Writing



4th Grade Reading



Ideas for Implementation

1. Use your data
2. Strengths base approach
 - What are the strengths of each teacher?
3. Common Language
 - book study using Teach Like a Champion
4. Homeroom teachers responsible for attending STATS and IEP meetings
5. Which teachers are responsible for which grades? i.e. Report cards

2013-2014 Platooning at Blue Ridge

- ▶ 1. 4th year of implementation
- ▶ 2. Dual Language and Platooning have met in the middle
- ▶ 3. Homeroom teacher and their role in STAT and IEP meetings
- ▶ 4. Content Teams
 - Content Leaders will meet the first Wednesday of each month with principal.
 - Content Leaders will meet with content teams twice a month. Discussions will focus on backwards planning and whatever the Domain for the month is and how it will look in specific contents.
 - All teams will be studying the book *Enhancing the Professional Practice* by Charlotte Danielson
 - Each content team will be responsible for planning one family night
 - Teams will write goals together (New Evaluation System)

Homeroom Teacher Responsibilities

Teacher	1	2	3	4	5	6	7	8	9	10	11	12
KA	Josie Moreno											
KB	Karen Hooper											
LA	Jane Frosen											
LB	Michael Garcia											
LC	Betsy Herrera-Tejada											
2A	Paula Nichols											
2B	Cheryl Thornley											
2C	Carla Hilde											
3A	Carly Holmg											
3B	Bethany Brown											
3C	Russell Carroll											
4A	Amber Ferraro											
4B	Tina Brennan											
4A	Arnell Garcia											
5A	Jarvis Saxe											
5B	Jarvis Saxe											

Homeroom Teachers:
 1 Take attendance
 2 Take test scores during drills of homeroom students
 3 Attend STA and IEP meetings
 4 Pass out any paper communication from the office

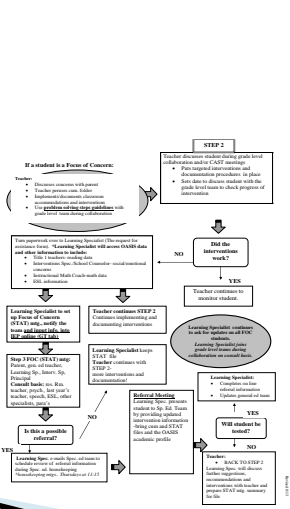
Grade Book and Reporting

- ▶ Grade book Responsibilities – 3rd Grade
- ▶ Russell

These standards will all be covered in Spanish during the 90 minute literacy block.

Reading

- Foundational Skills
 - Decode multi-syllabic words
 - Read irregularly-spelled words
- Key Ideas & Details
 - Reread & summarize stories & determine central theme
 - RIF: Summarize the main idea of a text and explain how it is supported by key details; summarize the text
 - R.2.5
 - R.2.7
 - LIT: Recount stories, including fables, folktales, and myths from diverse cultures; determine the central message, lesson, or moral and explain how it is conveyed through key details in the text
 - R.2.5
 - R.3.3
- Describe characters



Grade Book and Reporting

- ▶ Michael/Carey
- These standards will all be covered in either Eng. or Sp. during the 90 minute Sci/SS block.*

Explain how reasons and evidence support points in a text

RIF

R.2.4

LIT: Analyze a text

Writing

Text Types & Purposes

- OPINION writing
 - Opinion-organization
 - Informative/explanatory-elaboration
- INFORMATIONAL/EXPLANATORY writing
 - Informative/explanatory-elaboration
 - Informative/explanatory-organization
- NARRATIVE writing
 - Narrative-organization
 - Narrative-organization

Production & Distribution of Writing

- Organize writing
- Plan, revise & edit writing

Research to Build & Present Knowledge

- Conduct short research projects
- Take notes & list sources

Scheduling

1. Start early
2. Patience ☺
3. Second and third set of eyes
4. Keep in Mind
 - Number of minutes for planning per certificated staff
 - Each homeroom of students is receiving the correct number of PE, Music and Library pull outs

2013-2014 Teaching Schedule

7:50 Team Time	KA	KB	1A	1B	1C	2A	2B	2C	3A	3B	3C	4A	4B	5A	5B
8:00 AM Homeroom	Homeroom	Jane Math	Michelle Math	Michelle Math	Michelle Math	Michelle Math	Michelle Math	Michelle Math	Michelle Math	Michelle Math	Michelle Math	Michelle Math	Michelle Math	Michelle Math	Michelle Math
8:15 AM Library	Library	Jane Math	Michelle Math	Michelle Math	Michelle Math	Michelle Math	Michelle Math	Michelle Math	Michelle Math	Michelle Math	Michelle Math	Michelle Math	Michelle Math	Michelle Math	Michelle Math
8:45 AM Library	Library	Jane Math	Michelle Math	Michelle Math	Michelle Math	Michelle Math	Michelle Math	Michelle Math	Michelle Math	Michelle Math	Michelle Math	Michelle Math	Michelle Math	Michelle Math	Michelle Math
9:15 AM Library	Library	Jane Math	Michelle Math	Michelle Math	Michelle Math	Michelle Math	Michelle Math	Michelle Math	Michelle Math	Michelle Math	Michelle Math	Michelle Math	Michelle Math	Michelle Math	Michelle Math
9:45 AM Library	Library	Jane Math	Michelle Math	Michelle Math	Michelle Math	Michelle Math	Michelle Math	Michelle Math	Michelle Math	Michelle Math	Michelle Math	Michelle Math	Michelle Math	Michelle Math	Michelle Math
10:15 AM Library	Library	Jane Math	Michelle Math	Michelle Math	Michelle Math	Michelle Math	Michelle Math	Michelle Math	Michelle Math	Michelle Math	Michelle Math	Michelle Math	Michelle Math	Michelle Math	Michelle Math
10:45 AM Library	Library	Jane Math	Michelle Math	Michelle Math	Michelle Math	Michelle Math	Michelle Math	Michelle Math	Michelle Math	Michelle Math	Michelle Math	Michelle Math	Michelle Math	Michelle Math	Michelle Math
11:15 Lunch	Lunch														
11:15 Transition from recess	Transition from recess														
12:00 PM Library	Library	Jane Math	Michelle Math	Michelle Math	Michelle Math	Michelle Math	Michelle Math	Michelle Math	Michelle Math	Michelle Math	Michelle Math	Michelle Math	Michelle Math	Michelle Math	Michelle Math
12:30 PM Library	Library	Jane Math	Michelle Math	Michelle Math	Michelle Math	Michelle Math	Michelle Math	Michelle Math	Michelle Math	Michelle Math	Michelle Math	Michelle Math	Michelle Math	Michelle Math	Michelle Math
1:00 PM Library	Library	Jane Math	Michelle Math	Michelle Math	Michelle Math	Michelle Math	Michelle Math	Michelle Math	Michelle Math	Michelle Math	Michelle Math	Michelle Math	Michelle Math	Michelle Math	Michelle Math
1:30 PM Library	Library	Jane Math	Michelle Math	Michelle Math	Michelle Math	Michelle Math	Michelle Math	Michelle Math	Michelle Math	Michelle Math	Michelle Math	Michelle Math	Michelle Math	Michelle Math	Michelle Math
2:00 PM Library	Library	Jane Math	Michelle Math	Michelle Math	Michelle Math	Michelle Math	Michelle Math	Michelle Math	Michelle Math	Michelle Math	Michelle Math	Michelle Math	Michelle Math	Michelle Math	Michelle Math

2013-2014 Sample Pull Out Schedule

	Monday			Tuesday			Wednesday			
	PE	Music	Check out	PE	Music	Check out	PE	Music	Check out	
8:00 AM										8:00 AM
8:15 AM 3A		3C			3C	2C		3A	3B	4B
8:45 AM 2B		2A	3C		2B/A	2C/A	2C	2A	2C	KB
9:15 AM 4B		2B			2C/A	2B/A	2A	KA	3B	
9:45 AM KB		4A	KA		1A	1B		5A		
10:15 AM	KA	1B	KB	1B	1C		1B	4A	1A	10:15 AM
10:45 AM	3C	1A		1C	1B		5A	5B		10:45 AM
11:15 Lunch	Lunch									
Recess	over at 11:45									

Once you choose hope, anything's possible. ~Christopher Reeve

Una vez que escoja la esperanza, cualquier cosa es posible.



► What questions do you have?